



MITCHAM

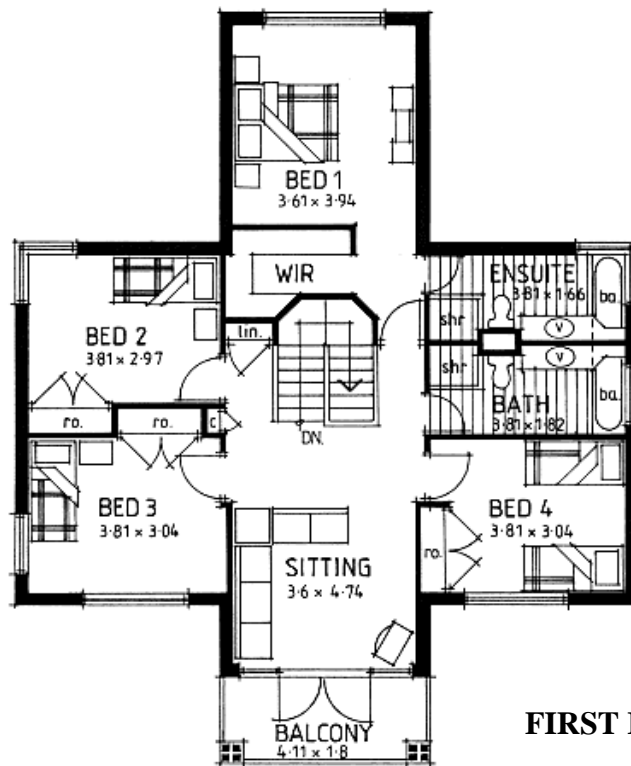
Classically designed 4 Bedroom luxury Federation style home. Sleeping area with a sitting area on the First Floor with all living spaces below.

Areas:

Ground Floor 163.79sqm:
 First Floor 113.17sqm:
 Verandah/Portico 29.89sqm:
 Carport 39.57sqm:
 Balcony 7.40sqm:
 Total 353.82sqm

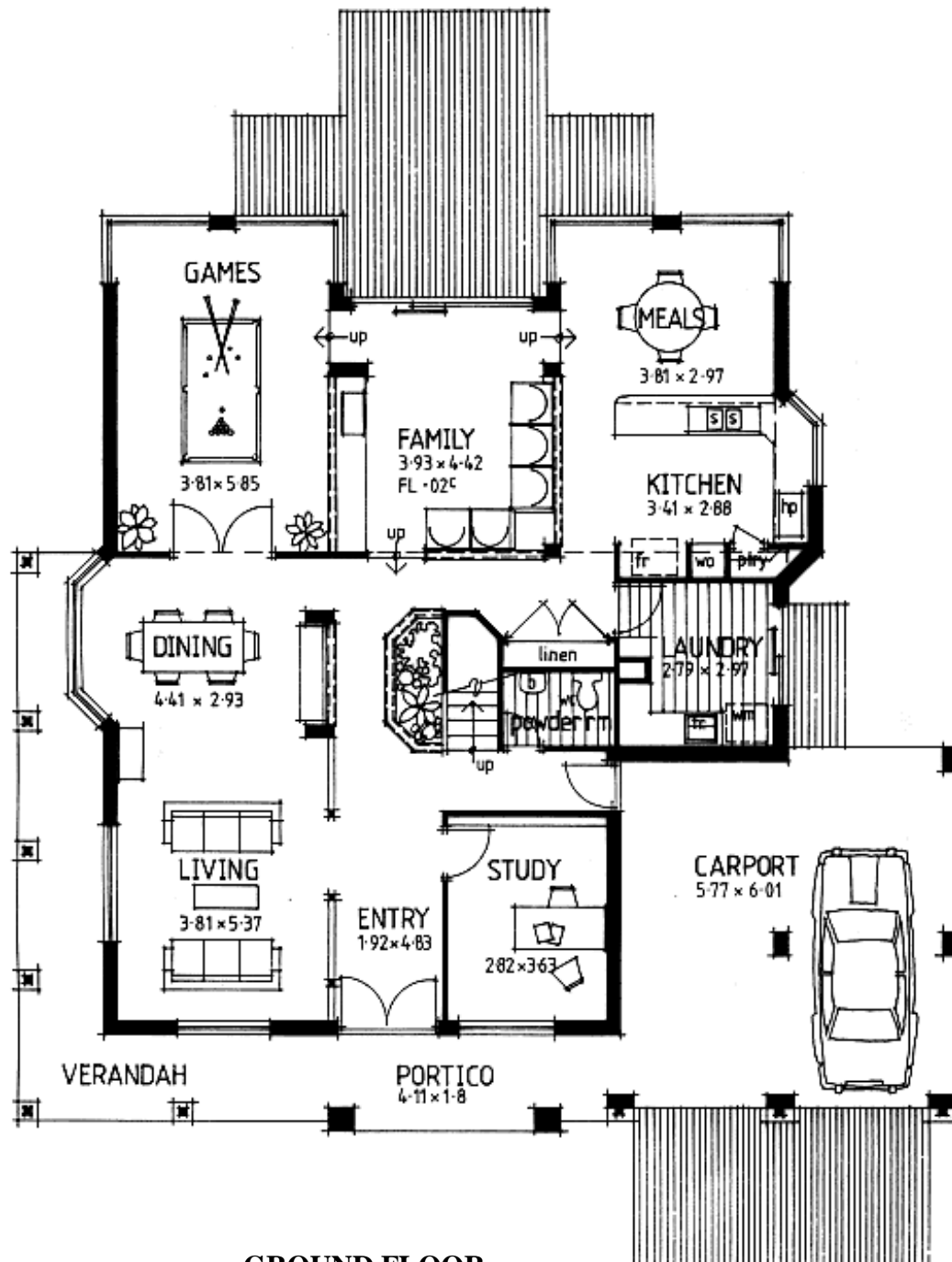
Width: 16.67metres

Depth: 16.43metres



FIRST FLOOR

MITCHAM



GROUND FLOOR



MOSMAN

The grand entry creates an ambience of space and comfort in this 4 bedroom family home with the master suite and study on the top storey.

Areas:

Ground Floor 171.00sqm:

Carport 35.60sqm:

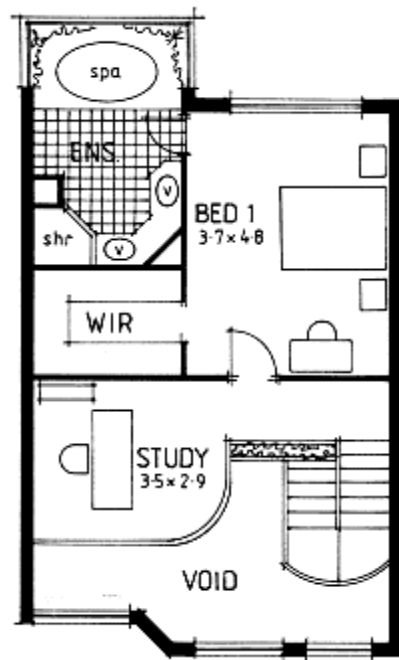
Verandah 9.01sqm:

First Floor 71.50sqm:

Total 287.11sqm

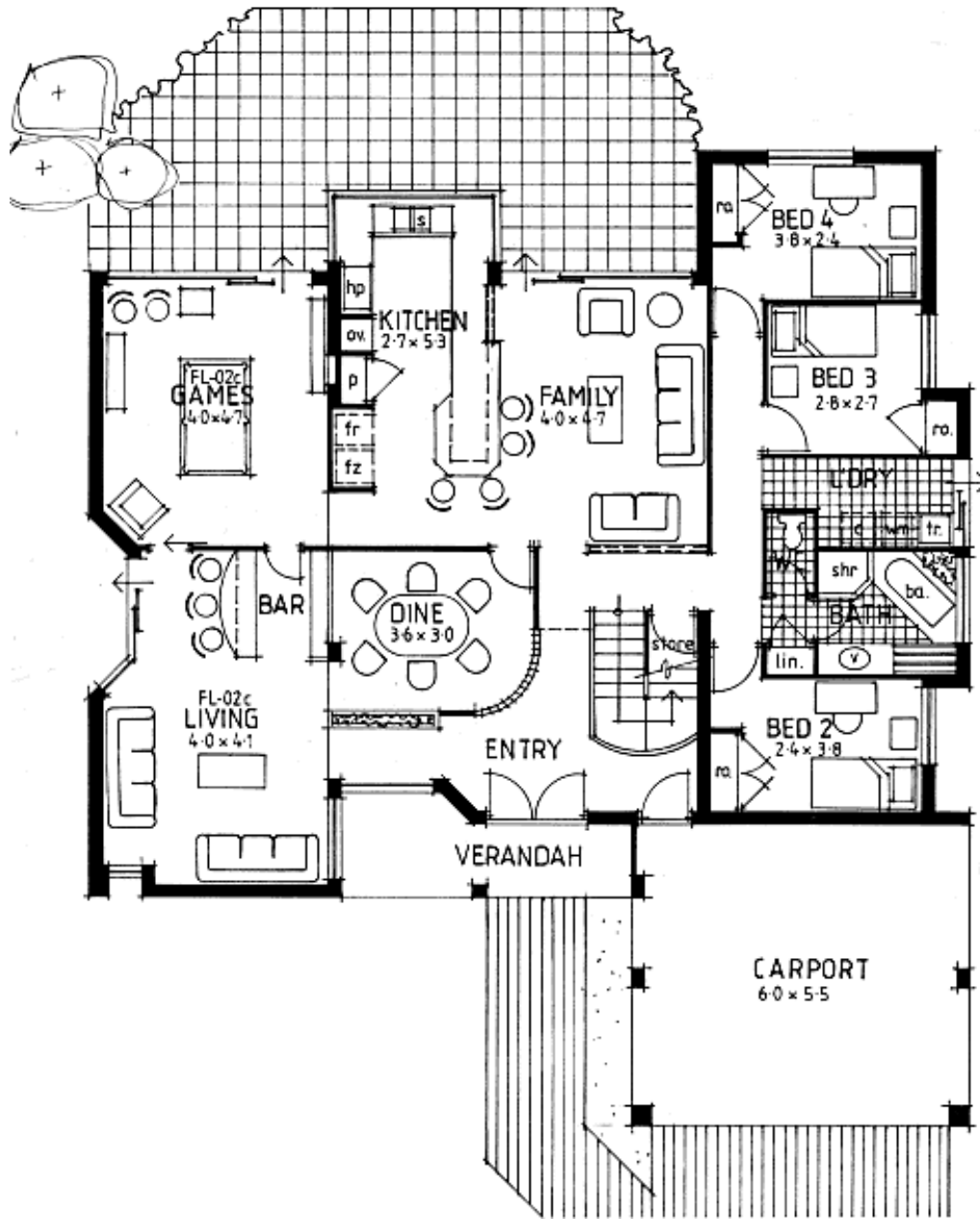
Width: 15.95metres

Depth: 17.87metres



FIRST FLOOR

MOSMAN



GROUND FLOOR



NORWICH mk1

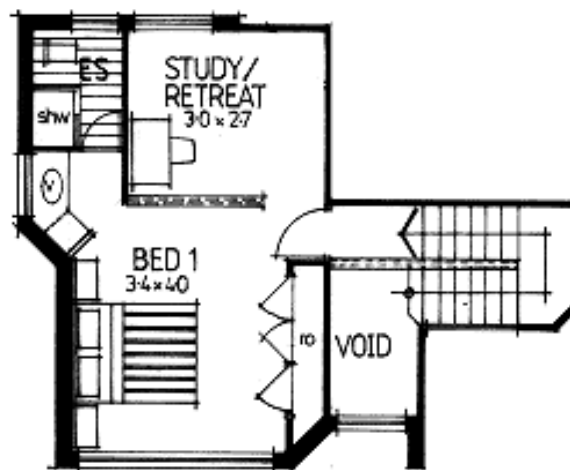
A private Master Bedroom "Penthouse Suite" sits atop the ground floor living areas of this stylish contemporary residence.

Areas:

Ground Floor 130.38sqm: Porch
4.08sqm: Pergola 5.15sqm: Planter
1.00sqm: Carport 30.47sqm: First
Floor 42.85sqm: Total 213.93sqm

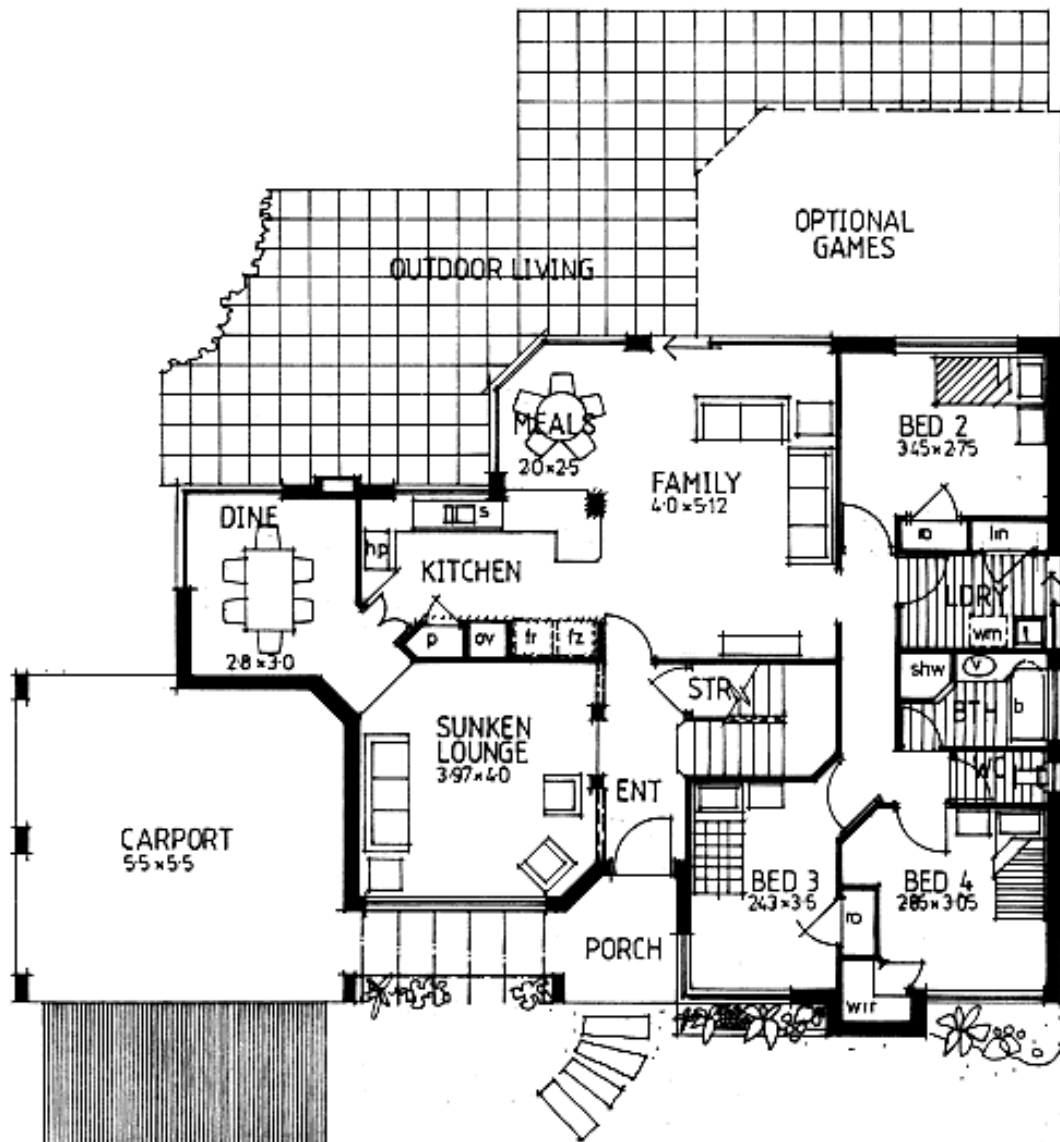
Width: 17.75metres

Depth: 10.79metres



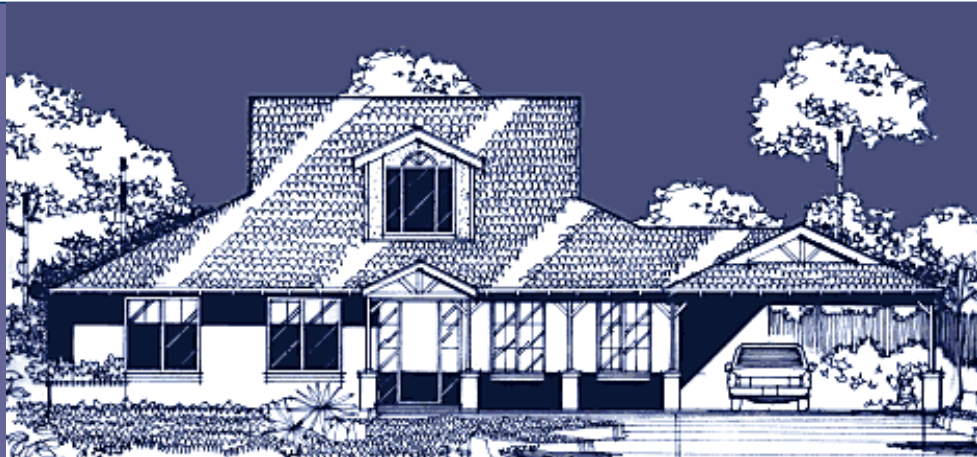
FIRST FLOOR

NORWICH MK1



GROUND FLOOR

NORWICH MK1



PENFOLD

The Loft Games room overlooks the entrance and family areas and the master bedroom is provided with a Parents Retreat. This 4 Bedroom home will suit any suburb.

Areas:

Ground Floor 174.17sqm:

First Floor 35.04sqm:

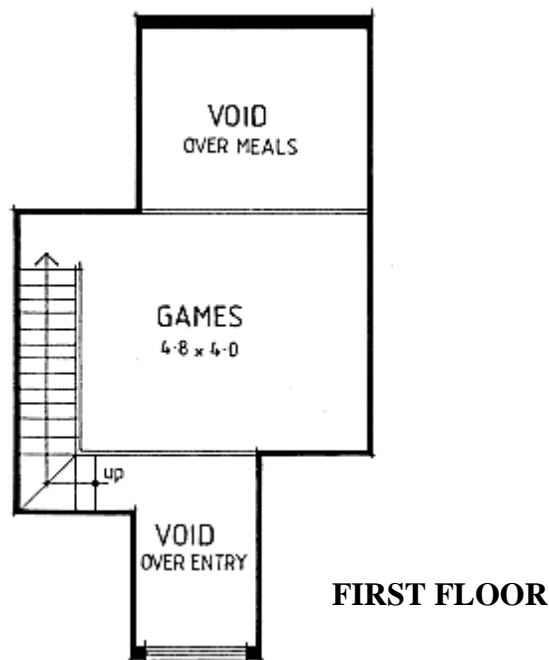
Verandah 13.04sqm:

Carport 32.17sqm:

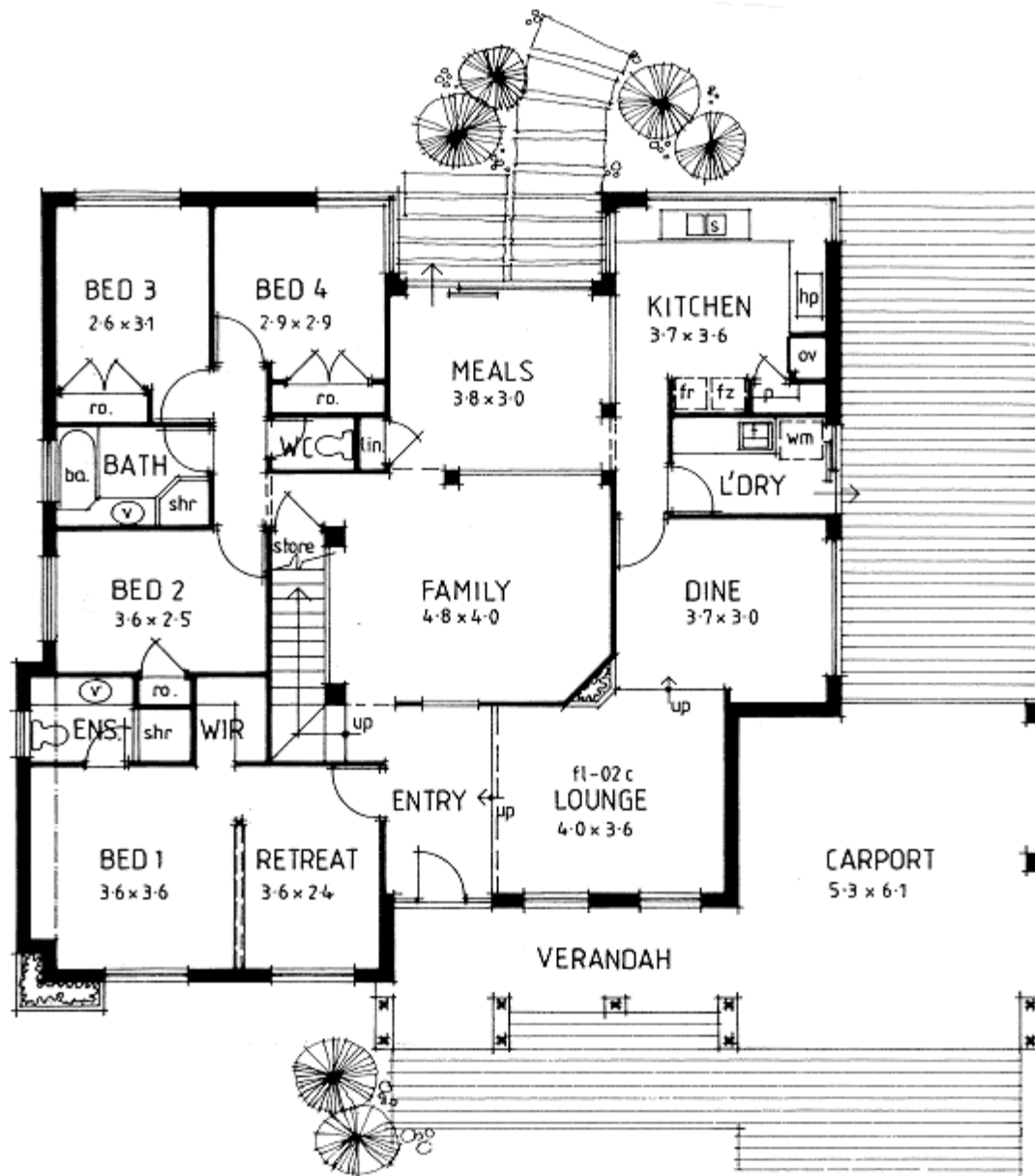
Total 254.43sqm

Width: 17.87metres

Depth: 13.91metres



PENFOLD



GROUND FLOOR