

AP9912CL

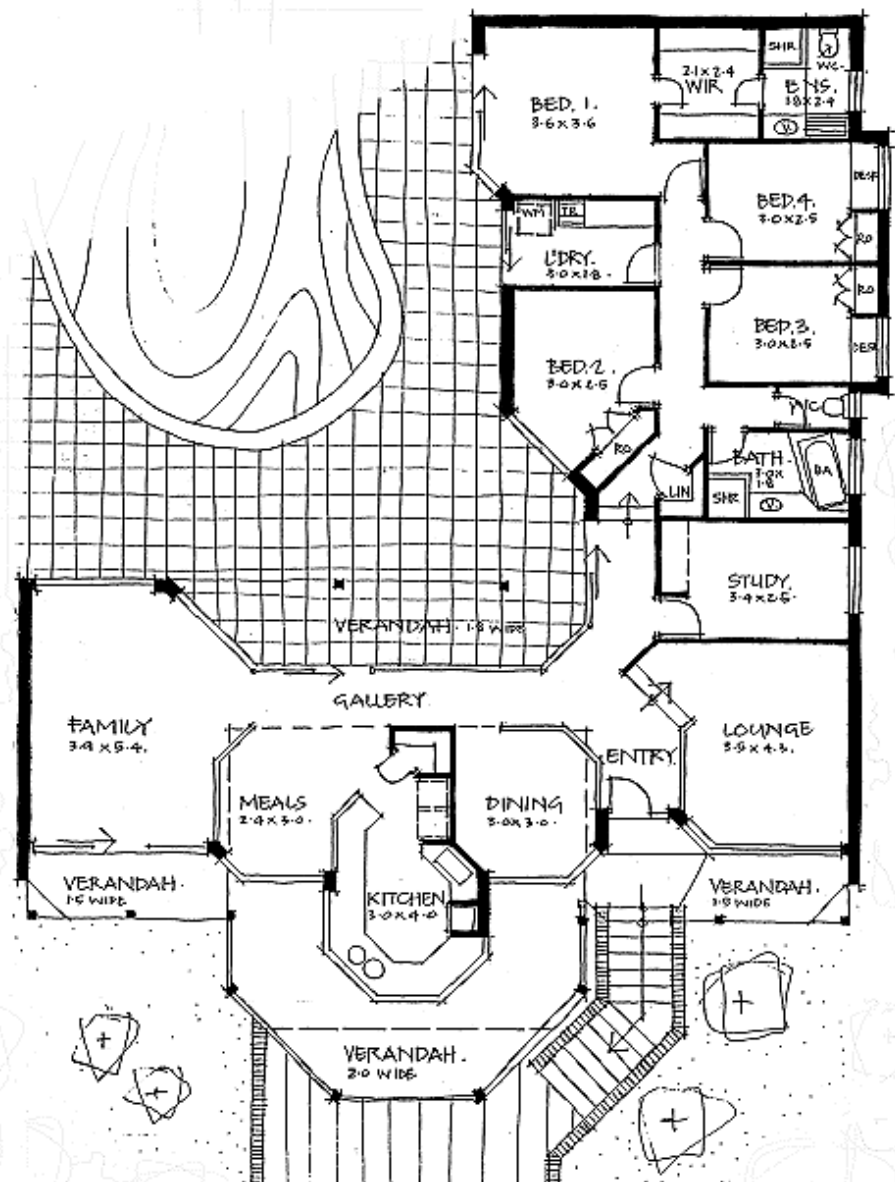
Ideally suited for a sloping building site – this home consists of 4 good sized bedrooms with living quarters relating to the private open space and to the street front.

Areas:

House 198.00sqm
 Undercroft 48.00sqm
 Verandah 55.00sqm
 Total area 301.00sqm

Width: 18.00 metres

Depth: 23.36 metres



AP9912CL



AP9920CL

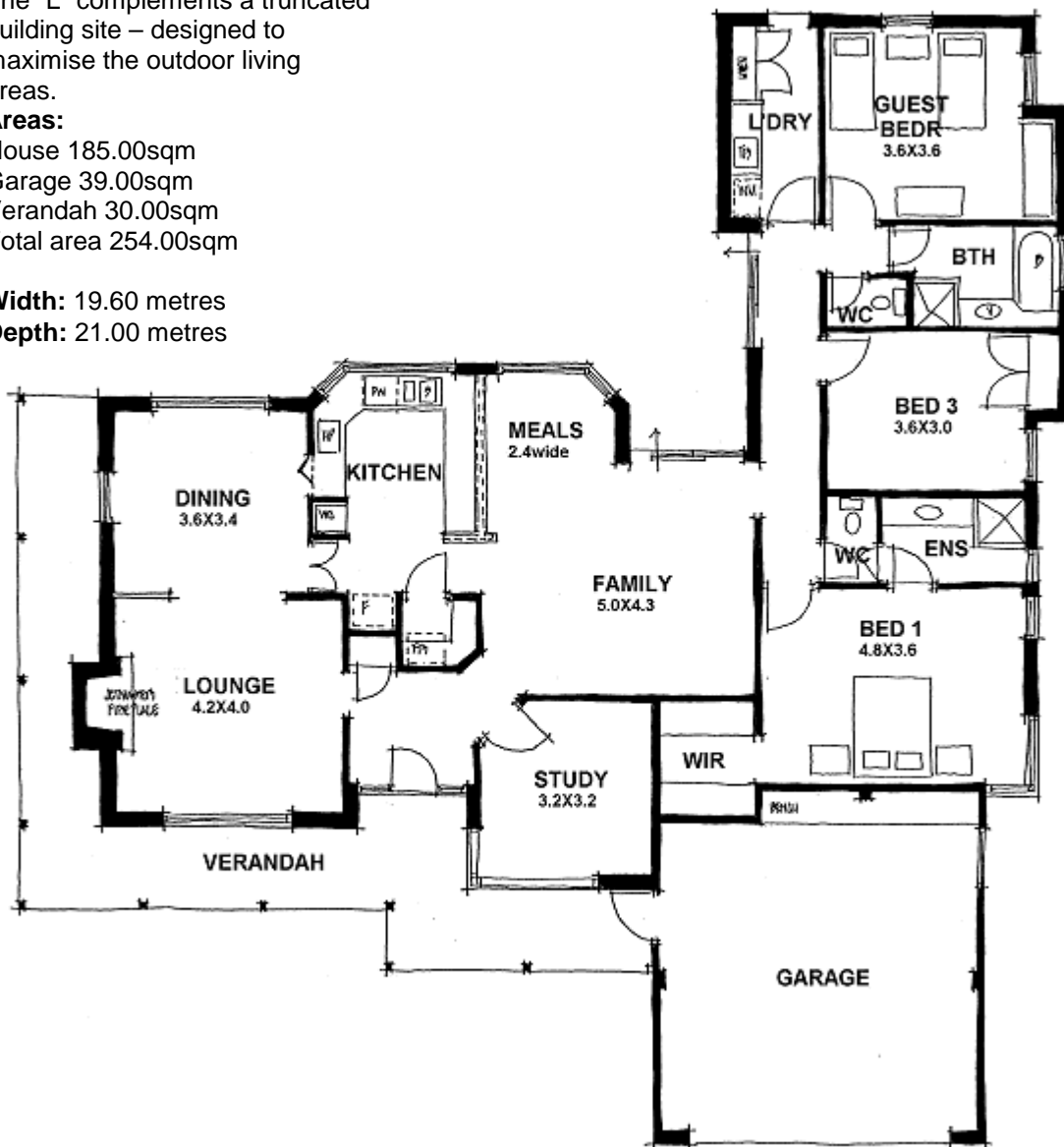
The "L" complements a truncated building site – designed to maximise the outdoor living areas.

Areas:

House 185.00sqm
 Garage 39.00sqm
 Verandah 30.00sqm
 Total area 254.00sqm

Width: 19.60 metres

Depth: 21.00 metres

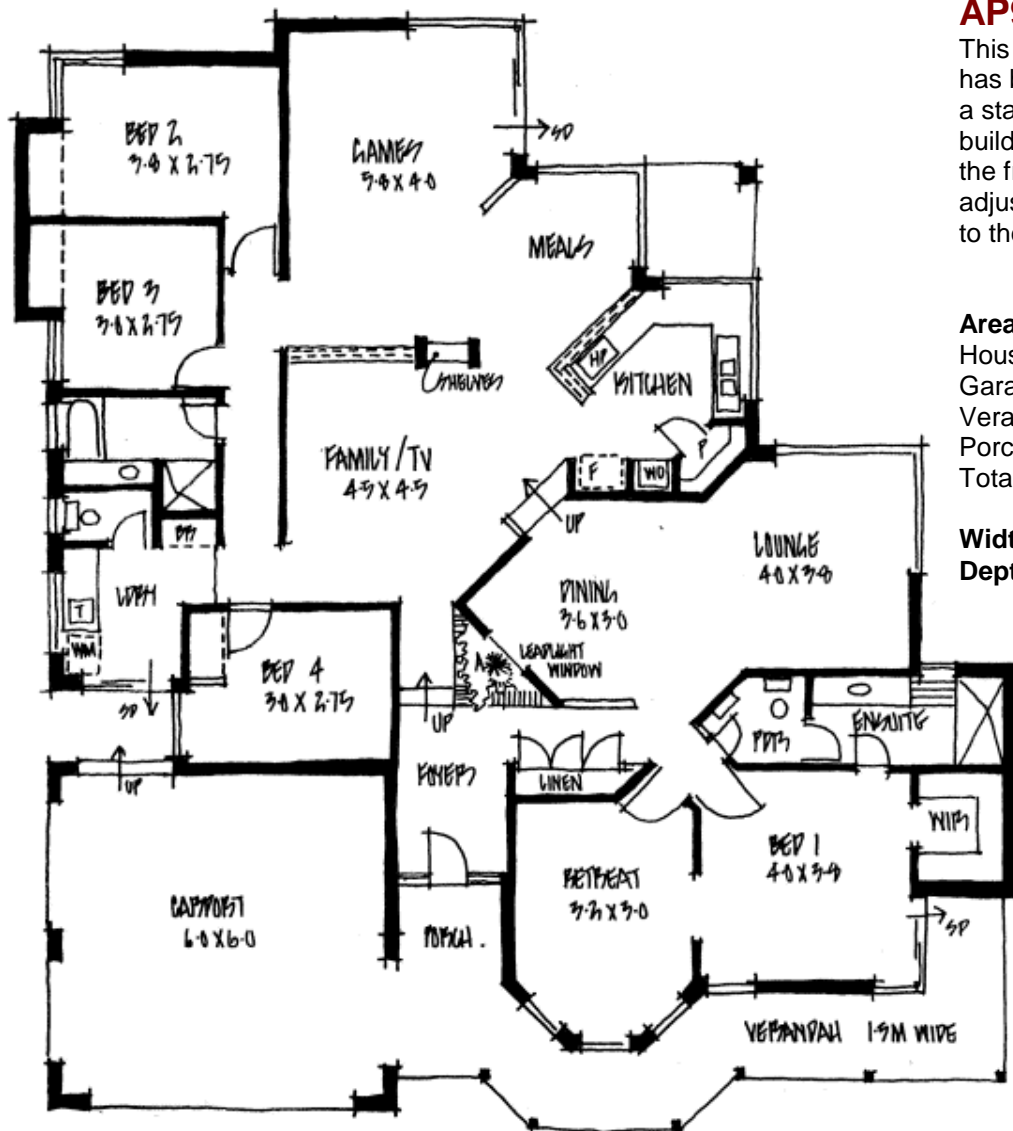


AP9920CL



AP9921CL

This colonial style home has been designed to suit a standard suburban building site. The levels to the front have been adjusted to create interest to the front elevation.



Areas:

House 218.00sqm
 Garage 37.82sqm
 Verandah 19.64sqm
 Porch 3.24sqm
 Total area 278.70sqm

Width: 17.22 metres

Depth: 19.45 metres

AP9921CL



AP9923CL

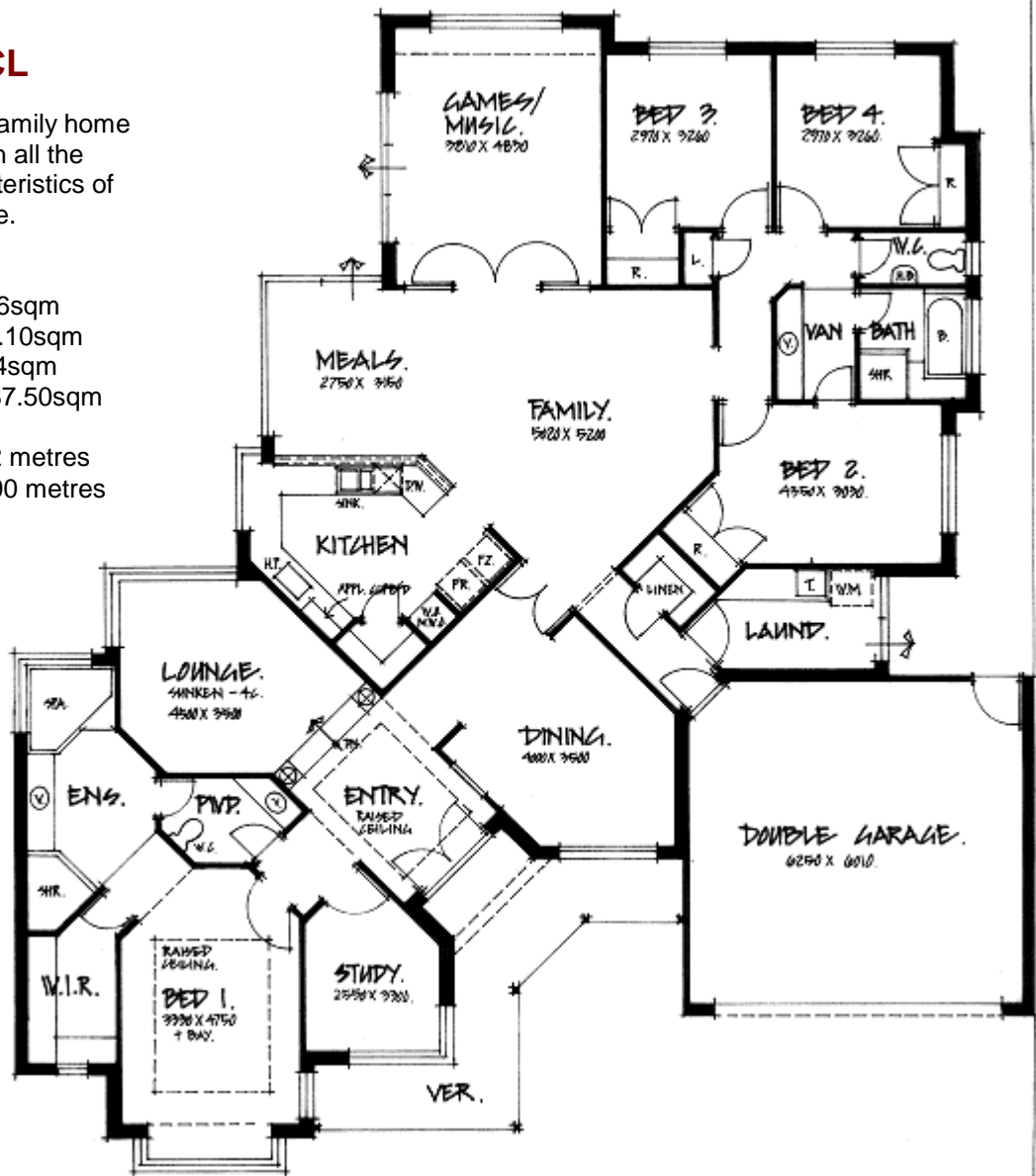
A suburban family home designed with all the detail characteristics of colonial home.

Areas:

House 232.66sqm
 Verandah 14.10sqm
 Garage 40.74sqm
 Total area 287.50sqm

Width: 18.82 metres

Depth: 21.590 metres



AP9923CL