



### AP9954ss

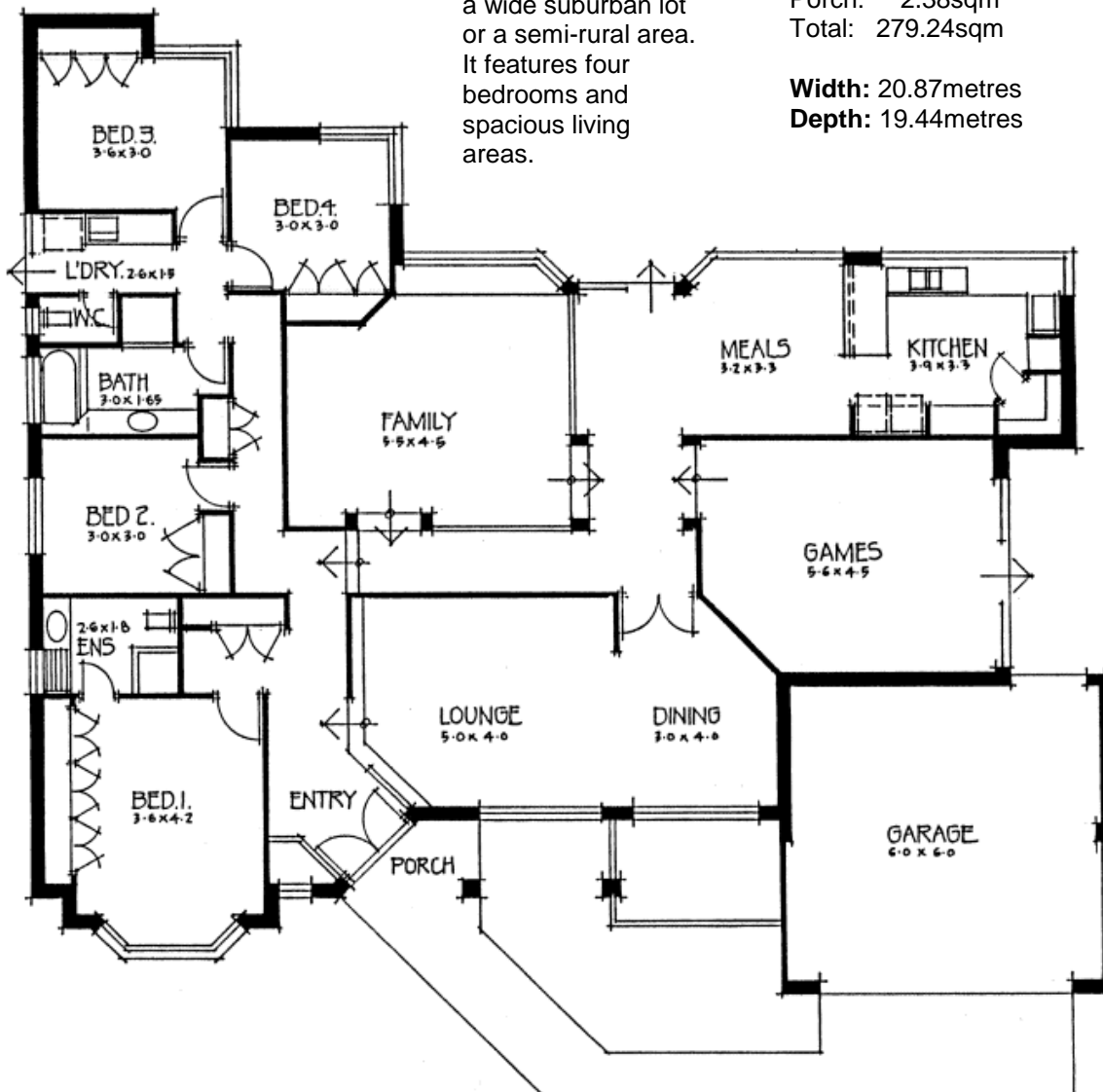
A home with big rooms designed for a wide suburban lot or a semi-rural area. It features four bedrooms and spacious living areas.

### Areas

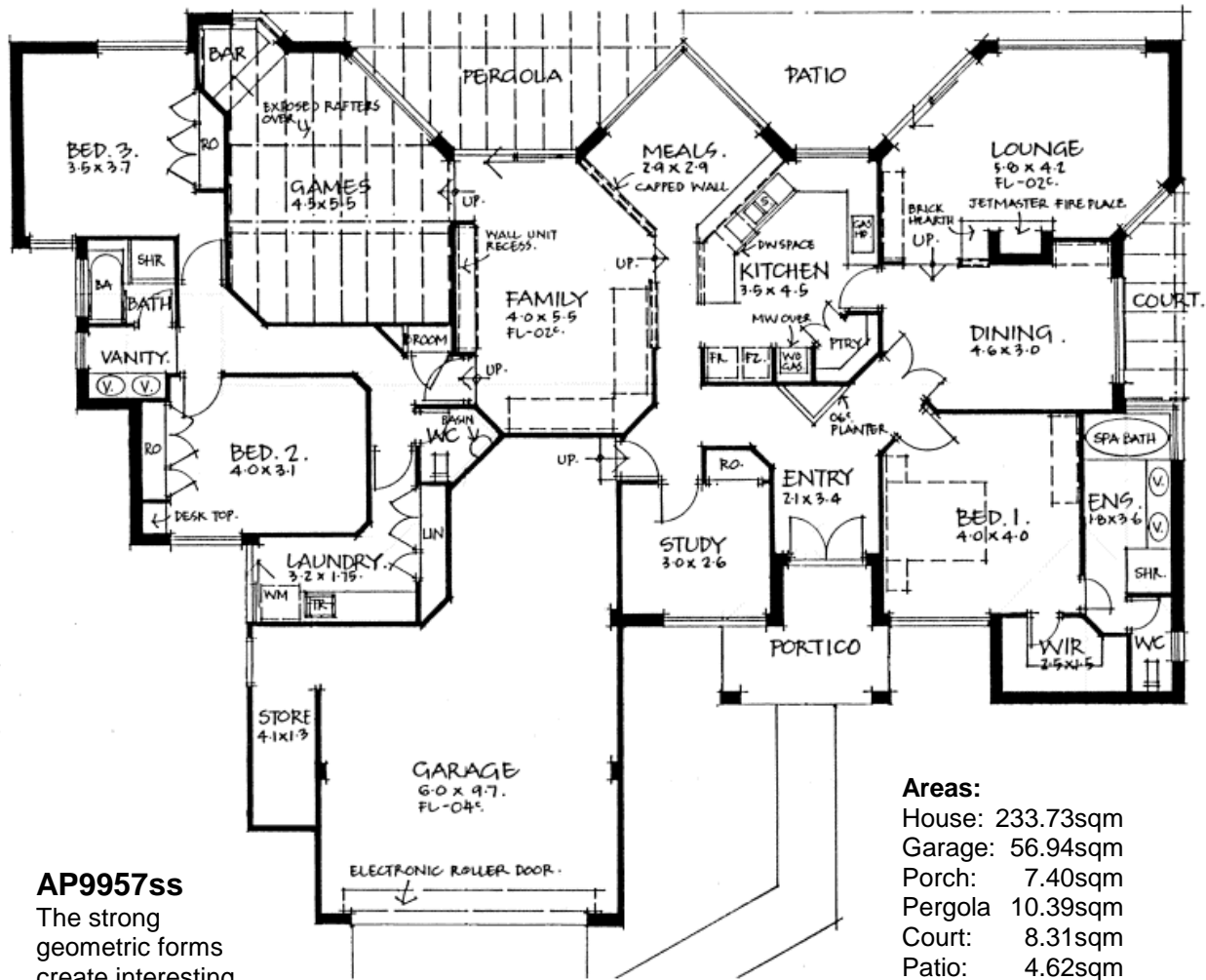
House: 236.54sqm  
 Garage: 40.32sqm  
 Porch: 2.38sqm  
 Total: 279.24sqm

**Width:** 20.87metres

**Depth:** 19.44metres



AP9954ss



**AP9957ss**

The strong geometric forms create interesting and spacious living areas. Suitable to most families living in a suburban area

- Areas:**  
 House: 233.73sqm  
 Garage: 56.94sqm  
 Porch: 7.40sqm  
 Pergola 10.39sqm  
 Court: 8.31sqm  
 Patio: 4.62sqm  
 Total: 321.39sqm

**Width:** 23.87metres  
**Depth:** 18.59metres

**AP9957ss**





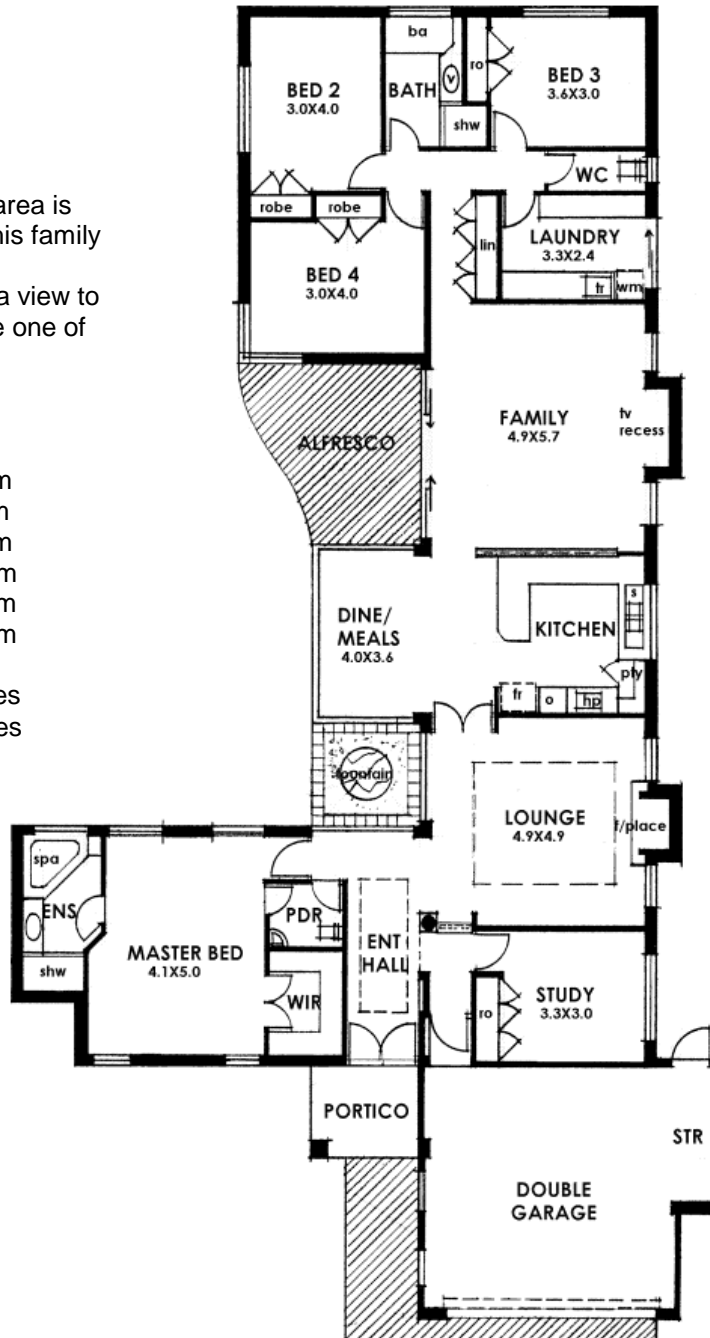
### AP9961ss

The dining/meals area is the focal point in this family home. The formal entrance hall with a view to a fountain area are one of the many features provided.

#### Areas:

House: 227.81sqm  
 Garage: 38.34sqm  
 Porch: 5.25sqm  
 Alfresco: 10.25sqm  
 Fountain: 6.00sqm  
 Total: 287.65sqm

**Width:** 15.35metres  
**Depth:** 30.23metres



### AP9961ss